



Manufacturer of glass reinforced concrete products





Skonto Group

Skonto Concrete Cladding is part of the Skonto Group, global turnover of 300M EUR of which the UK market represents 50M EUR

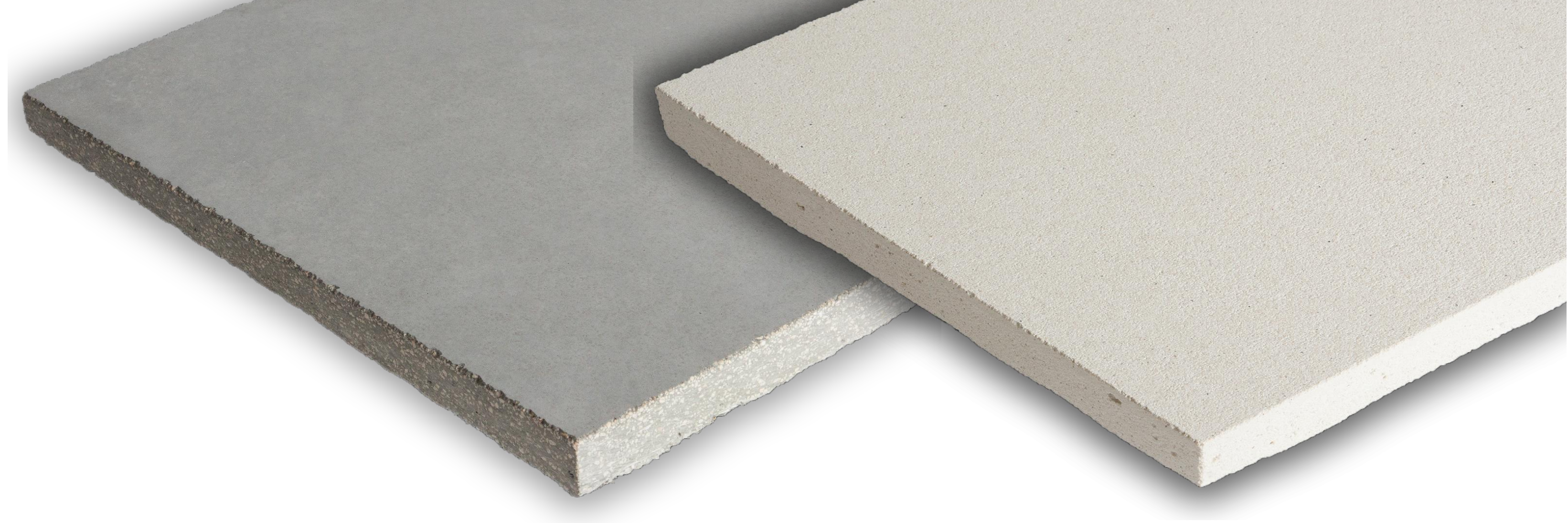




Glass Reinforced Concrete

- First buildings in 70s
- Wide choice in form and texture
- Lightweight, durable & customizable
- Fireproof
- Long service life
- Easy on-site handling





Value engineering

- ▶ efficient alternative for precast concrete
- ▶ economic option for natural and cast stone



Precast concrete



Natural stone

Our GRC (Glass Reinforced Concrete)



Spray-up glass fiber reinforced concrete,
Manufactured to GRCA Grade 18P.

Formed from a Portland cement
(EN 197-1), silica sand (maximum grain
size 1,2 mm) mix with acrylic polymers,
superplasticizers, alkali resistant fibers
and inorganic coloring pigments

- ▶ internal and external wall claddings
- ▶ window returns, structural and non – structural infill panels of balcony balustrades

Lightweight, durable & customisable = architectural freedom



Design & production of GRC panels and backing systems



Key Features:

- ▶ 12mm thickness (27kg/m²)
- ▶ BIM ready 3D design
- ▶ Single mould size up to 2x4m
- ▶ 5- sided panels
- ▶ Backing systems adjustable in all axes
- ▶ Stainless steel / aluminium / galvanized steel backing systems
- ▶ Fireproof class A.1

Lightweight, durable & customisable = architectural freedom



Factory at a glance

- 3700 m² production space
- 300 m² office space
- 50 production staff

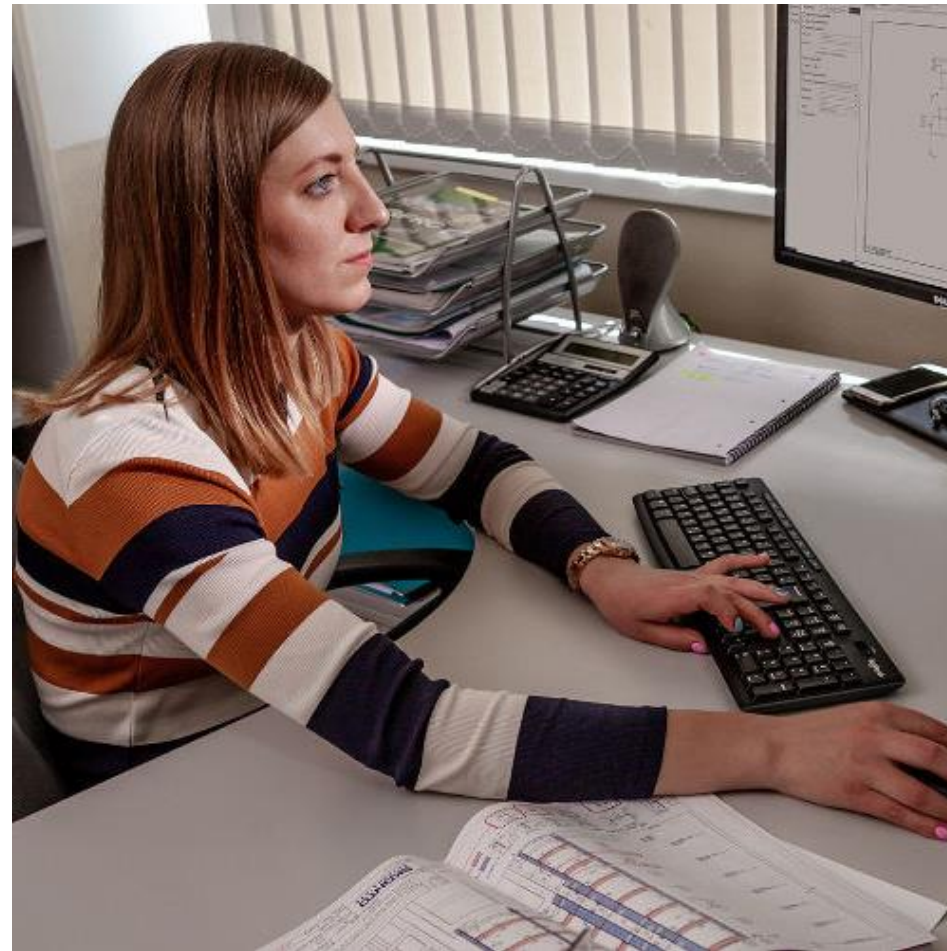


SKONTO
CONCRETE CLADDING

Production capacity

◀ 25,000 m² Annual production capacity

GRC Production process



designing



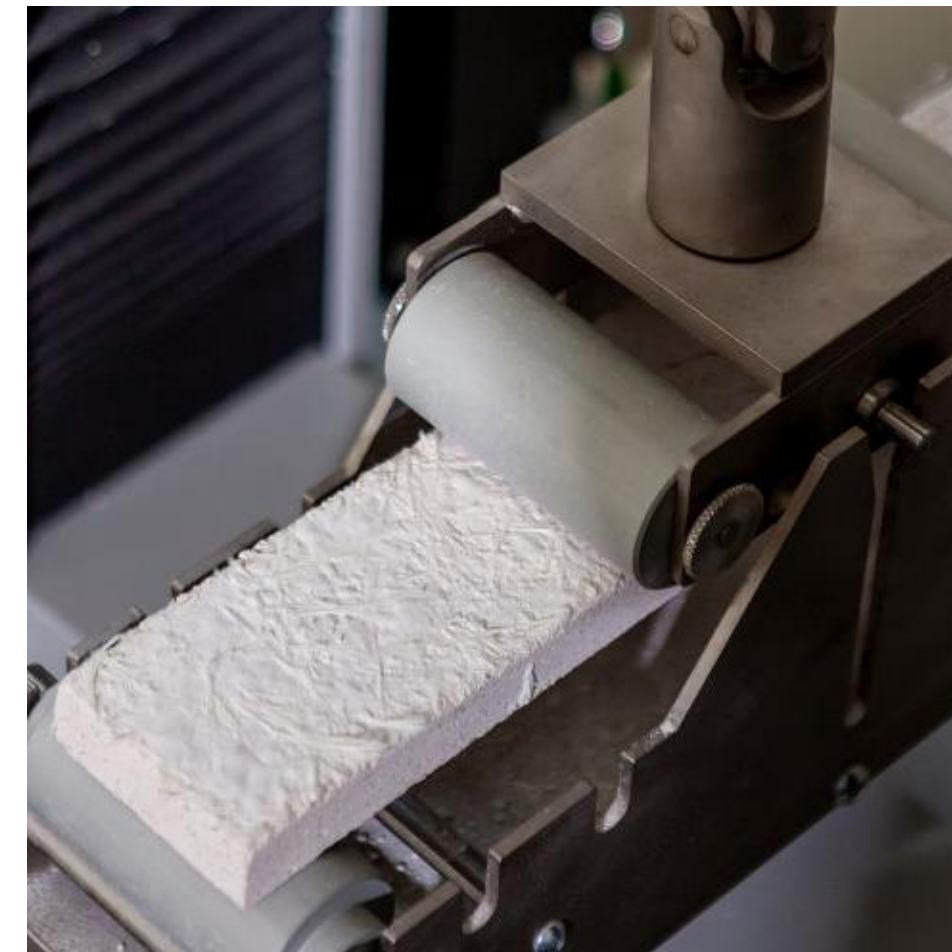
pre-mix preparation



spraying



production



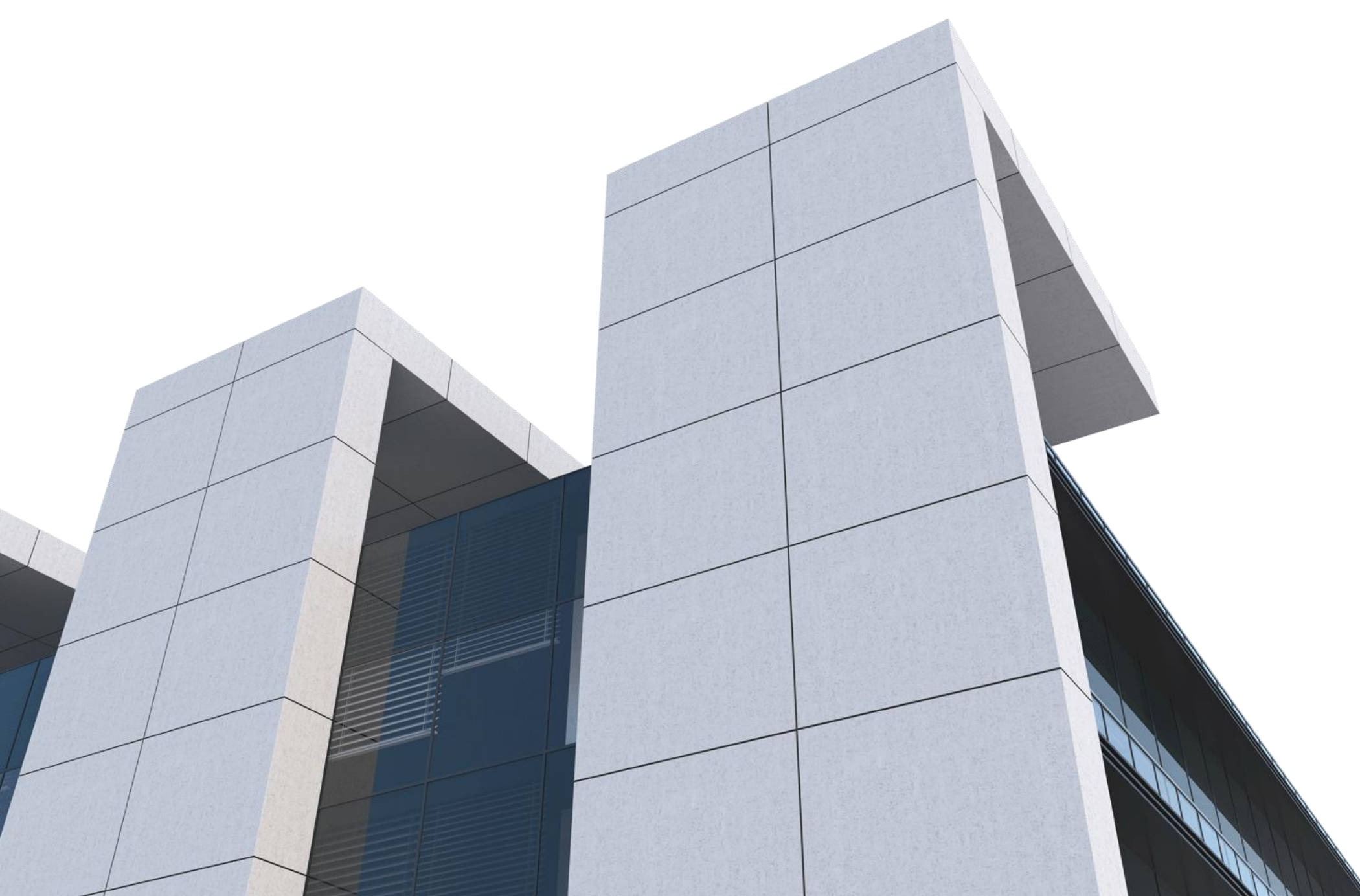
testing



packaging

All the way through - From CAD to Site

Technical Specification



Limit of Proportionality (LOP) N/mm ²	8
Modulus of Rupture (MOR) N/mm ²	21
Shear strengths; In Plane Shear (N/mm ²)	10
Total ultimate shrinkage	<0.2%
Impact test (CWCT note 75)	Class 1
Surface water absorption at wet weather conditions (%)	8



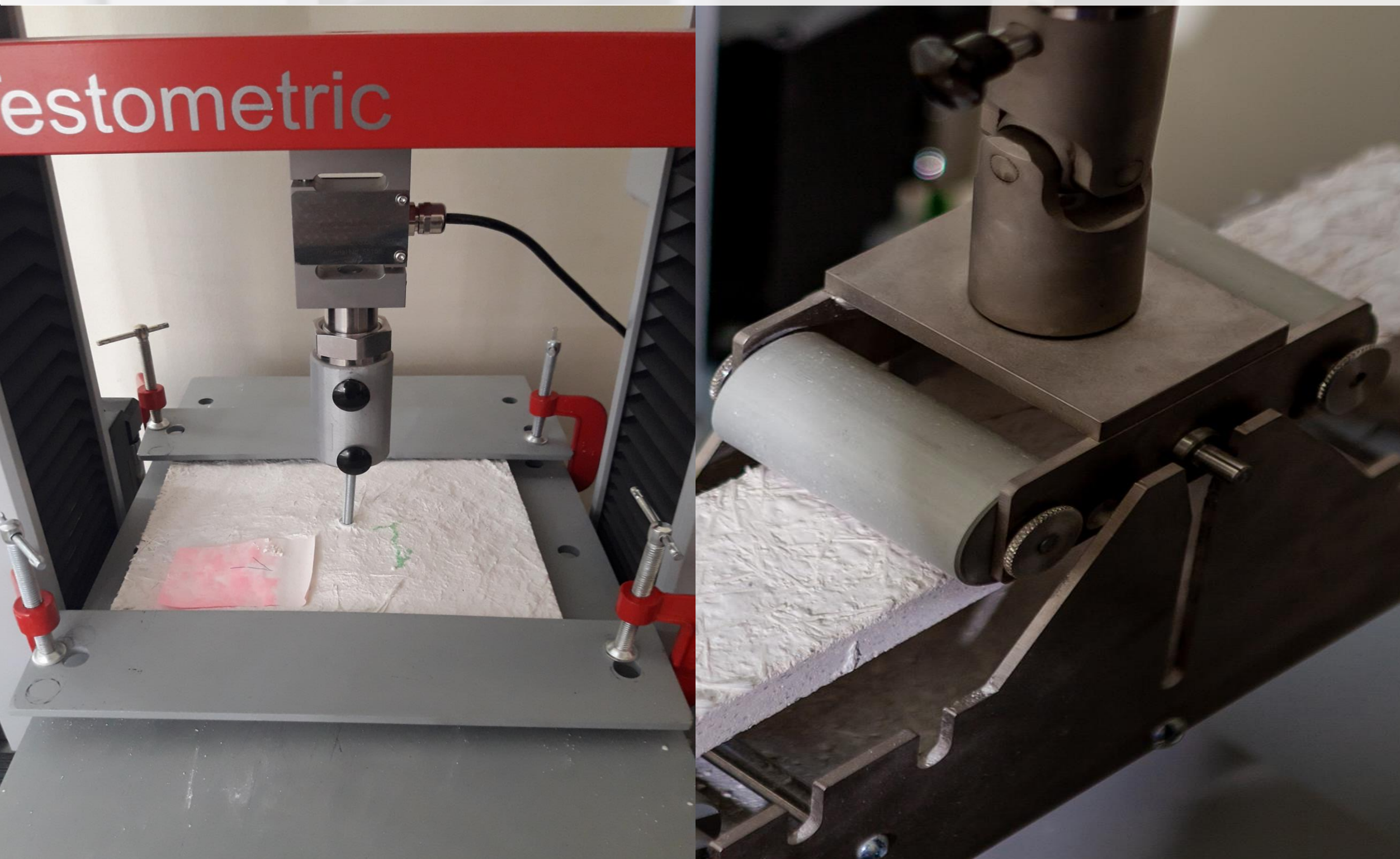
SKONTO
CONCRETE CLADDING

ISO Certified production



Committed & certified to delivering the best

Internal tests



- ▶ Bending test BS EN1170-5:1998
Fixing pull out and shear tests
- ▶ Plasticity of the mortar.
"Slump test" method BS EN1170-1:1998
- ▶ Fiber content in fresh GRC.
"Wash-out test" BS EN1170-2:1998
- ▶ Fiber content of sprayed GRC.
"Bag and bucket test" BS EN1170-3:1998
- ▶ Absorption of water by immersion
and dry density. BS EN1170-6:1998

Finishes

- ▶ Smooth or textured surface
- ▶ Wide choice of colours
 - Through coloured
 - Inorganic pigments
- ▶ Products are weatherproof and lightfast
- ▶ Decorative aggregates
 - Visible stones
 - Enhanced colors
- ▶ Maximum mould size single piece 2x4m



SKONTO
CONCRETE CLADDING

01_01 B-18/
White raupsh

Rough surface

- ▀ Wide choice of colours
- ▀ Through coloured
- ▀ Option with decorative aggregate
- ▀ Panel thickness 12mm + texture





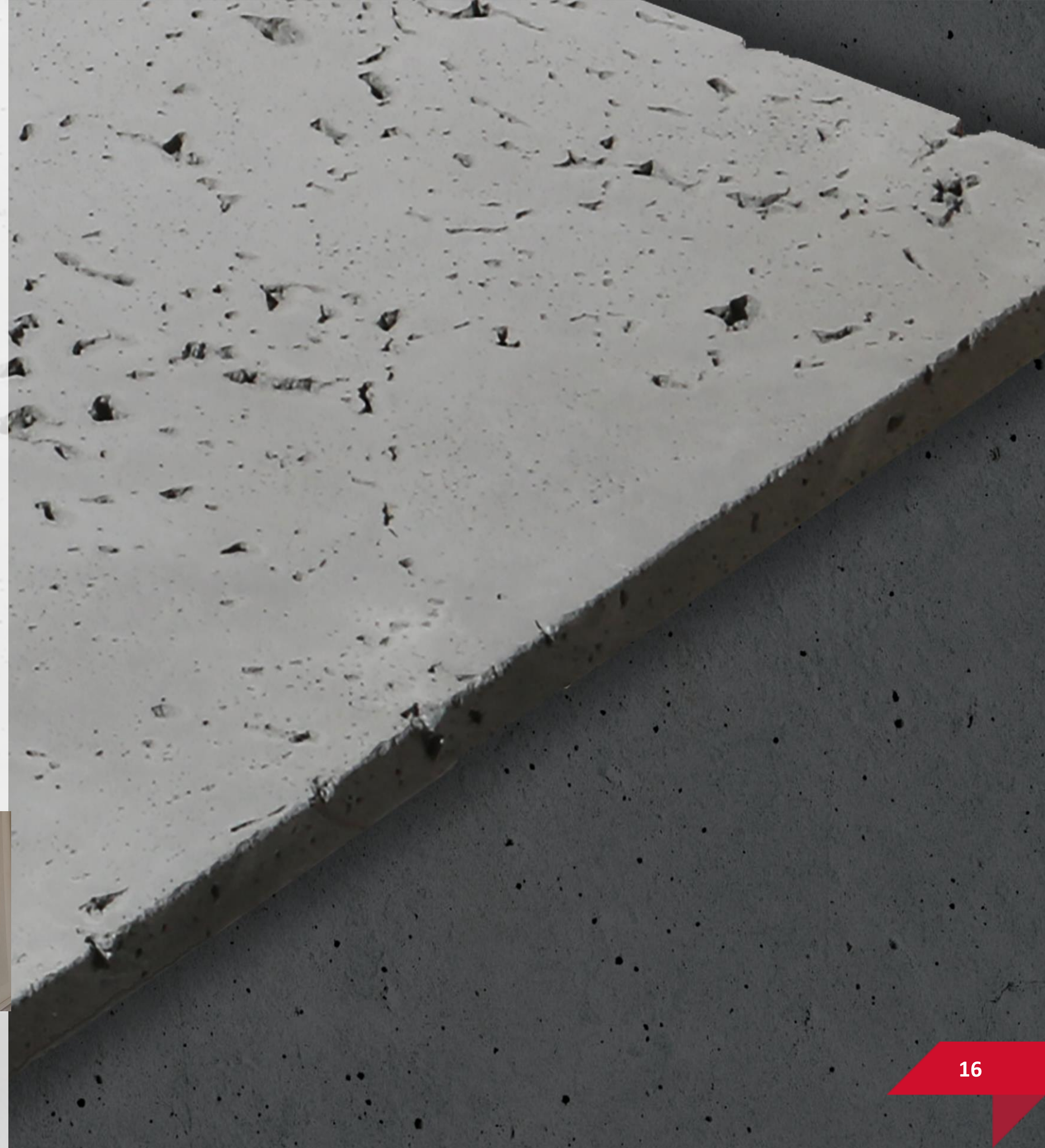
Smooth surface

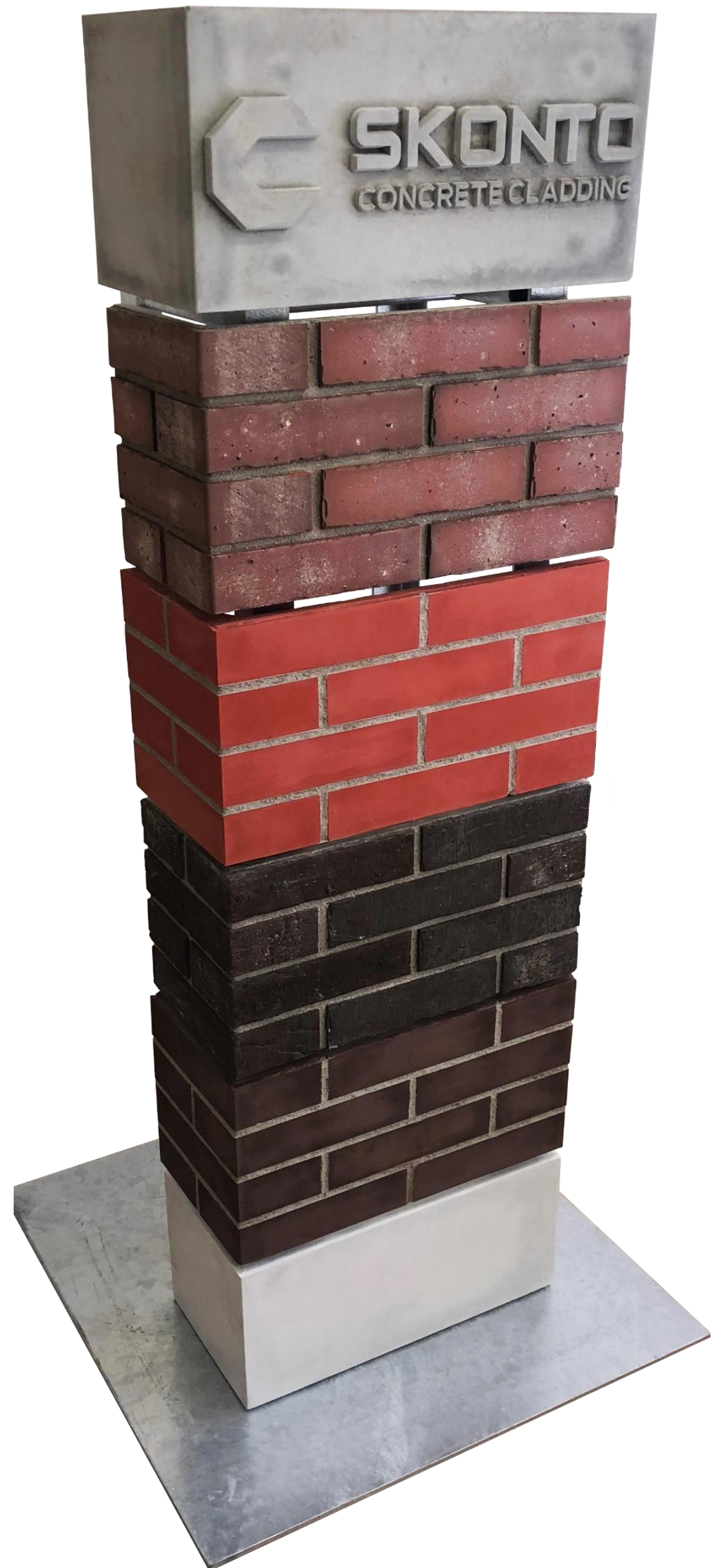
- ◀ Wide choice of colours
- ◀ Through coloured
- ◀ Weatherproof



Patterns

- ▶ High quality and precision in house mould production
- ▶ Experience with RECKLI formliners
- ▶ Graphic concrete
- ▶ Maximum sizes may vary



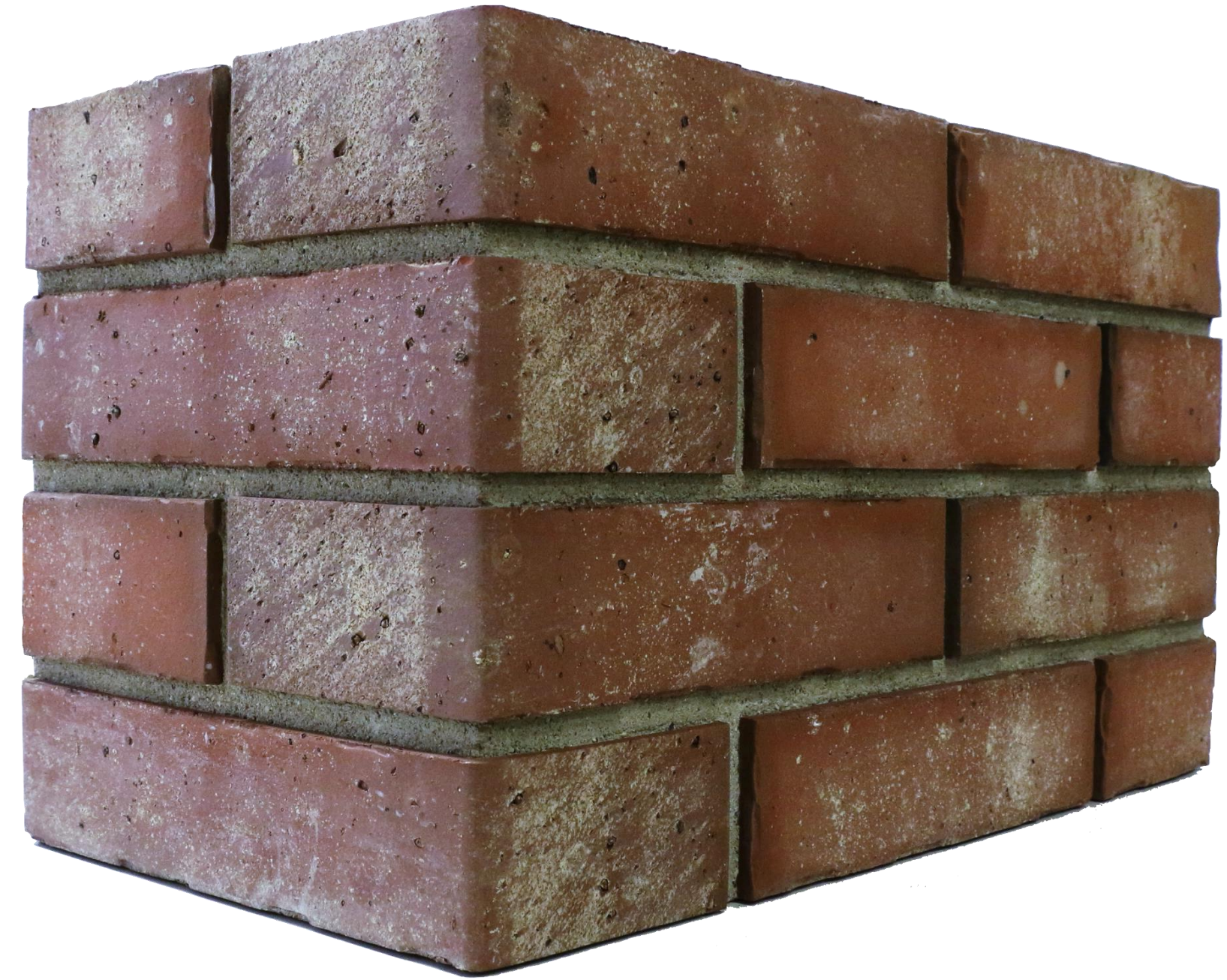


Brick faced GRC

- ◀ Lightweight solution to achieve brick faced finish 50-70kg/m²
- ◀ Thin brick faced wall cladding 40-60mm
- ◀ Fast installation with panel sizes limited only by transportation
- ◀ Mechanically fixed brick-slips – durable, safe and fireproof

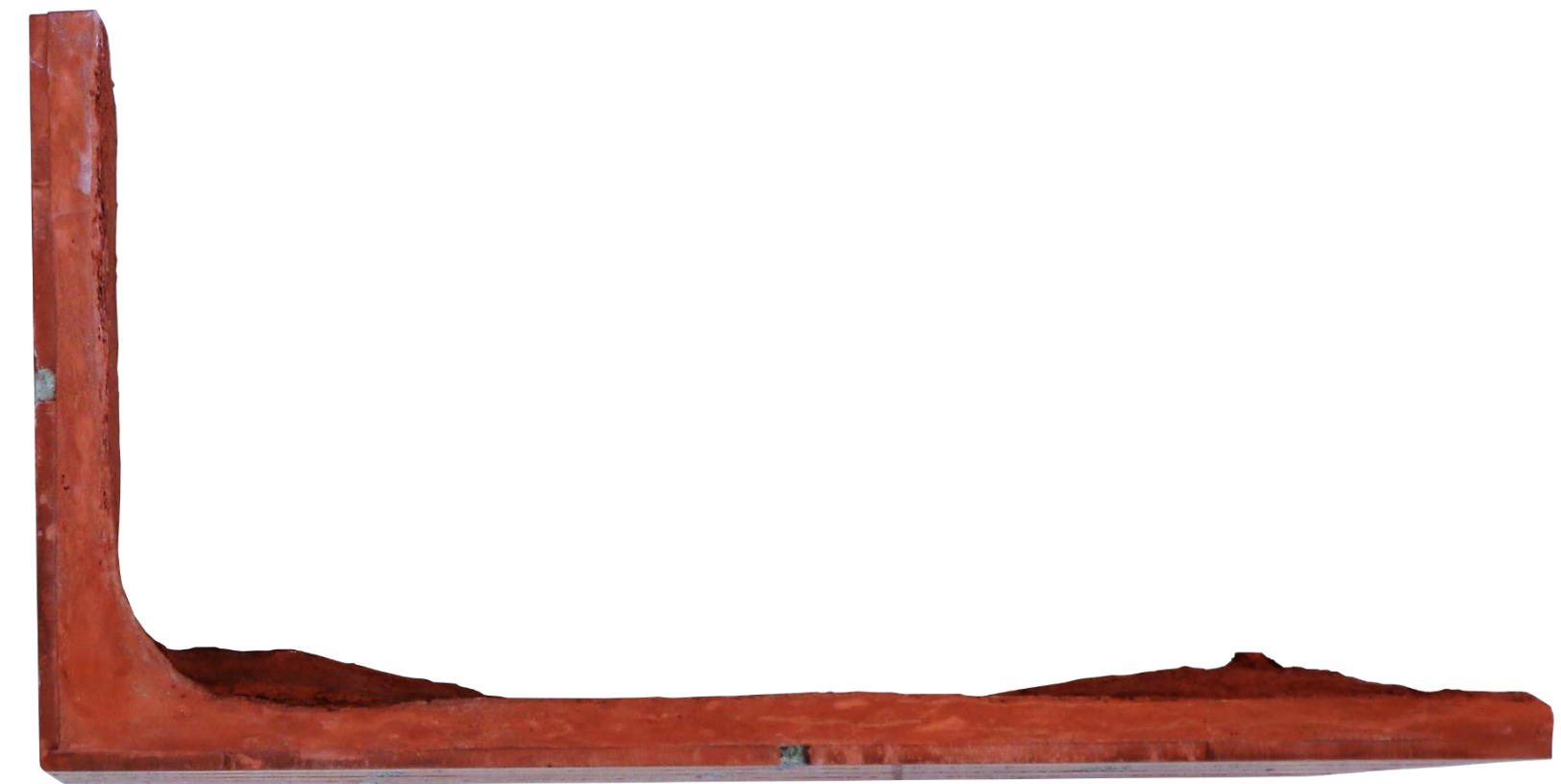
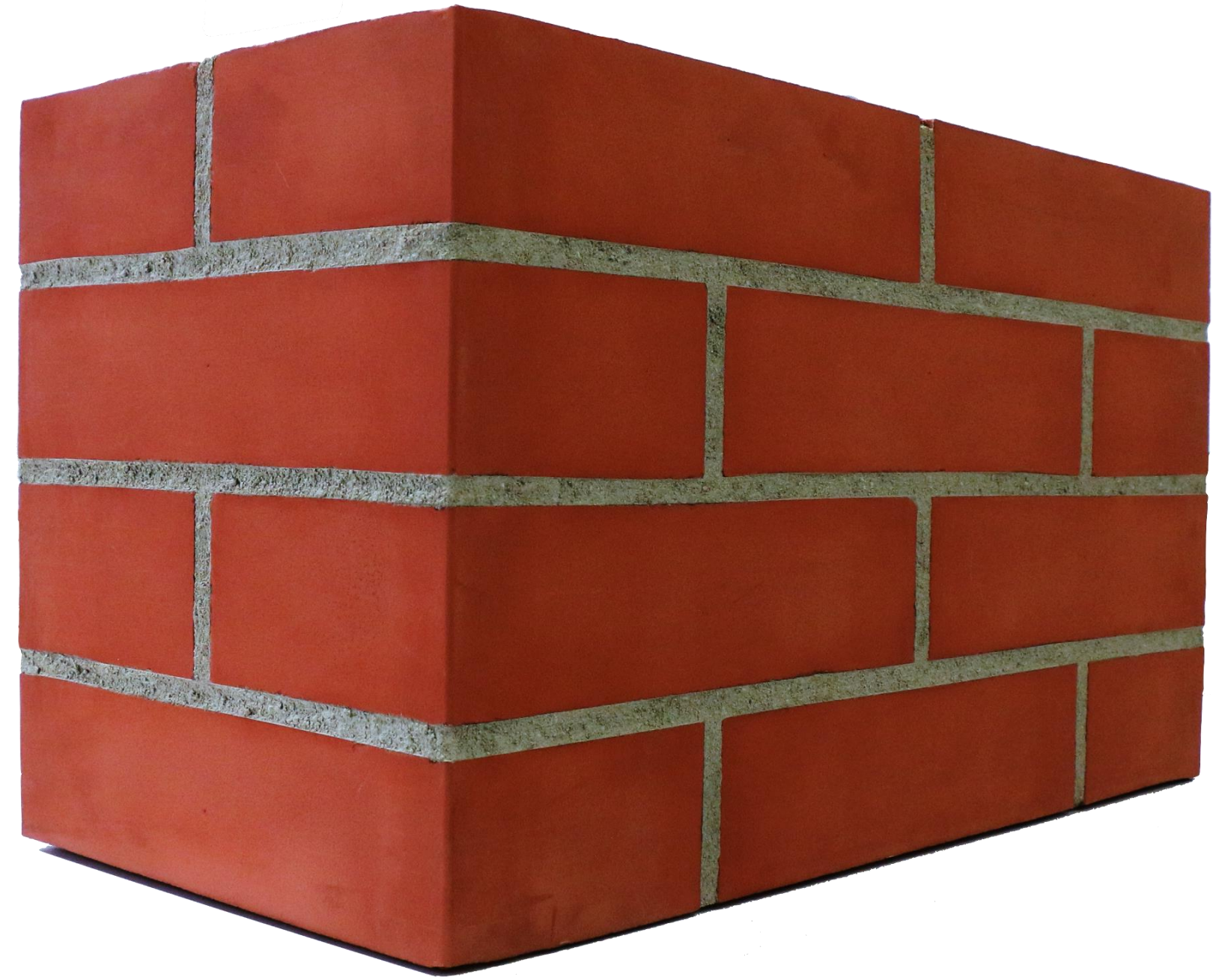
Brick-slip faced GRC

- Any brick slips from any manufacturer can be used
- Each brick slip is mechanically bonded with GRC backing using multiple stainless steel anchors
- Manually pointed mortar joints in any colour and texture
- Panel dimensions limited only by transportation



Brick textured GRC

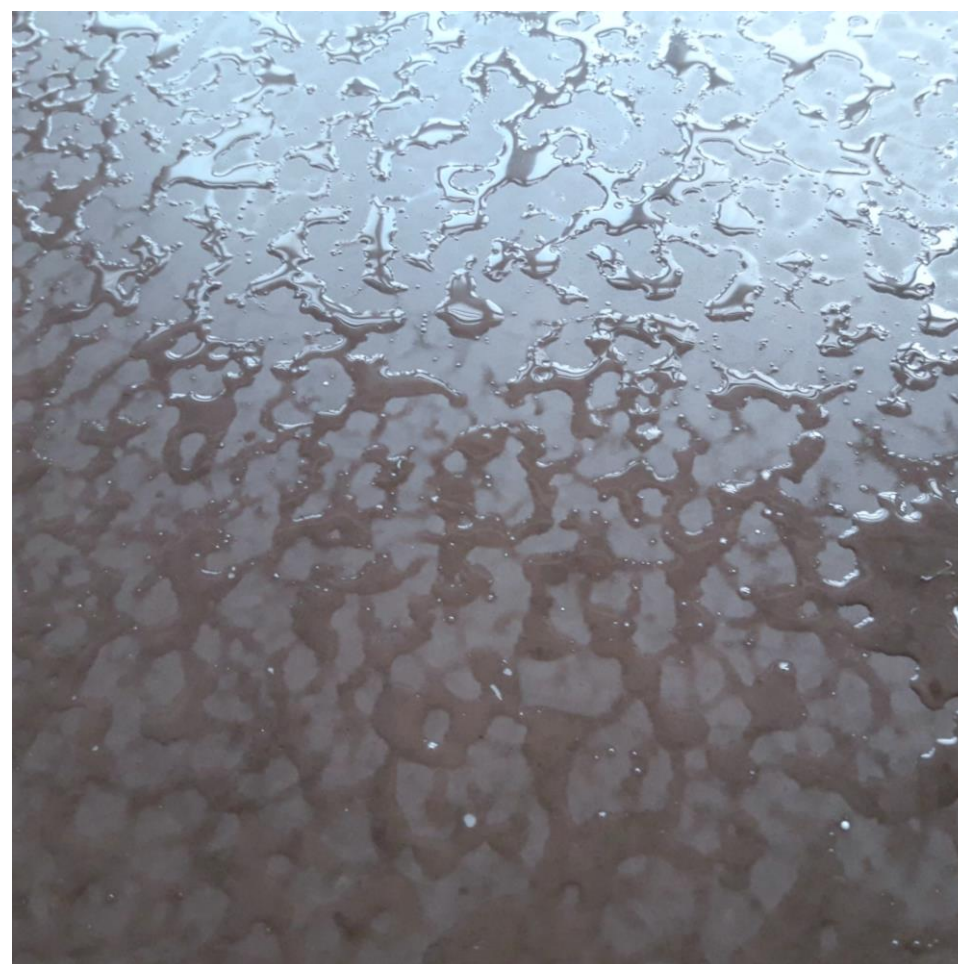
- Grade 18P direct sprayed GRC with brick texture and manually pointed dummy joints
- Panels are through coloured to ensure consistency of colour even if chipped
- Panel dimensions limited only by transportation
- Fireproof A.1





SKONTO
CONCRETE CLADDING

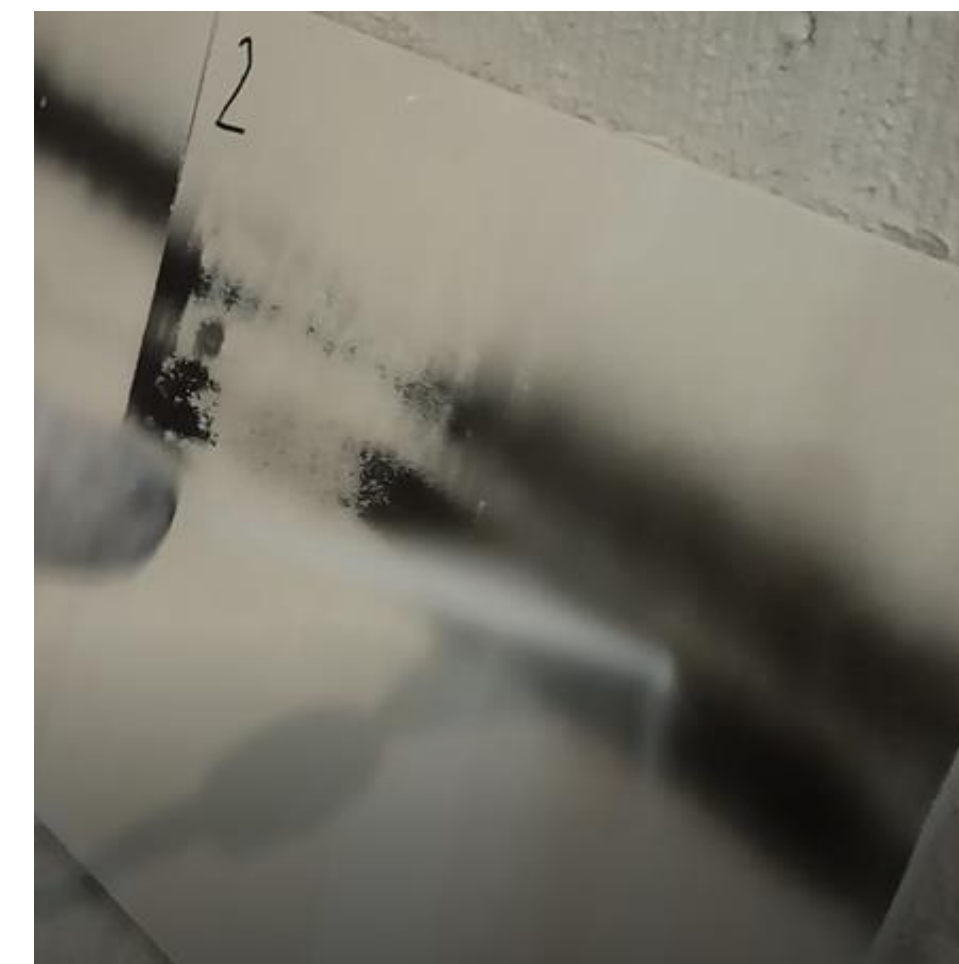
Additives



◀ **Hydrophobic**
Embedded or
surface applied



◀ **Anti Graffiti**
Panel with anti
graffiti coating



◀ Panel without
antigrffiti coating

Durable & Practical

Complex shapes



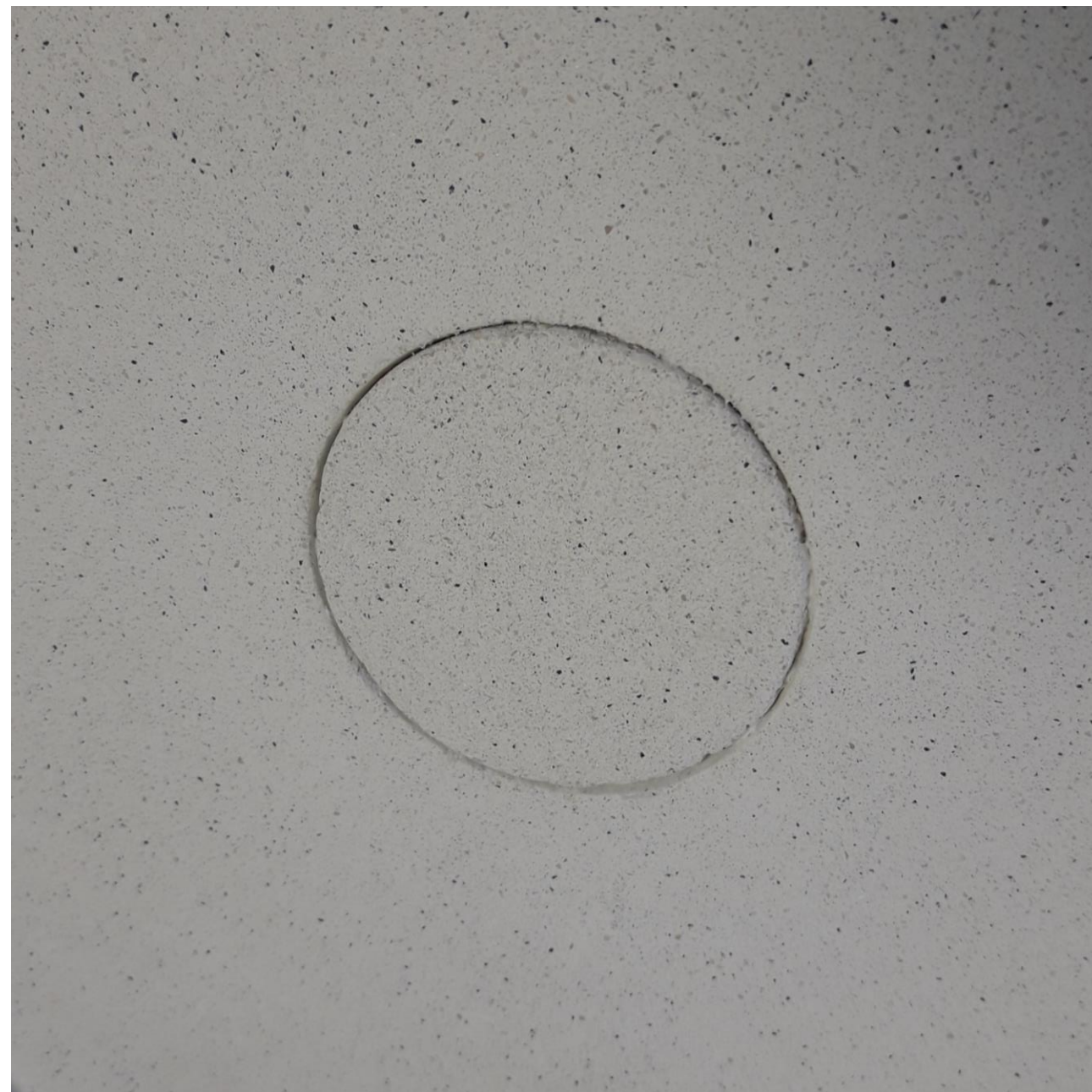
Built-in support frame for mounting & superior durability

Packaging

- ◀ Packaging is constructed exclusively from FSC timber
- ◀ Strict packaging design safety guidelines
- ◀ Efficient use of materials leads to reduced waste
- ◀ Efficient use of space leads to lower pollution and costs

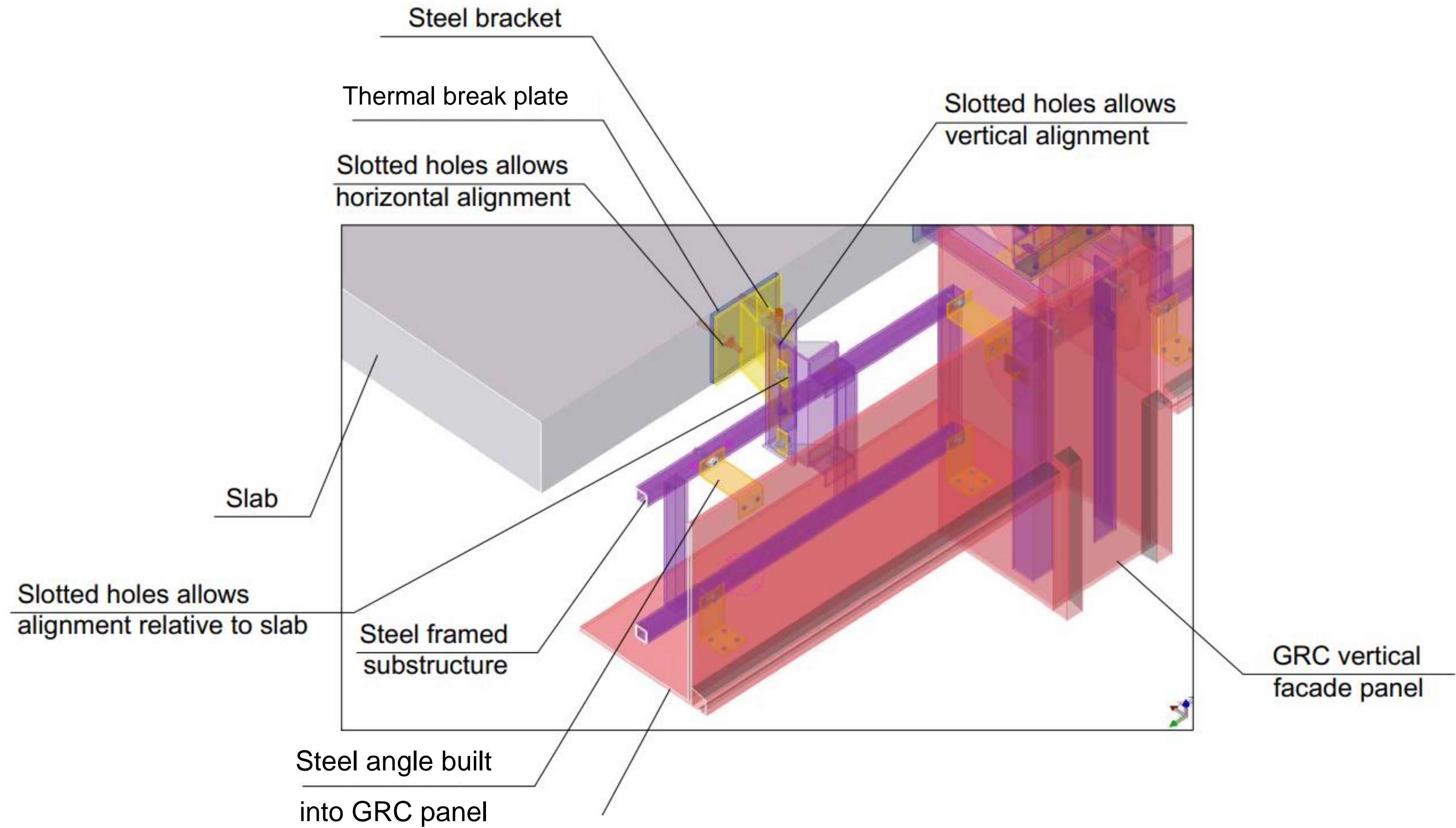


Technical options

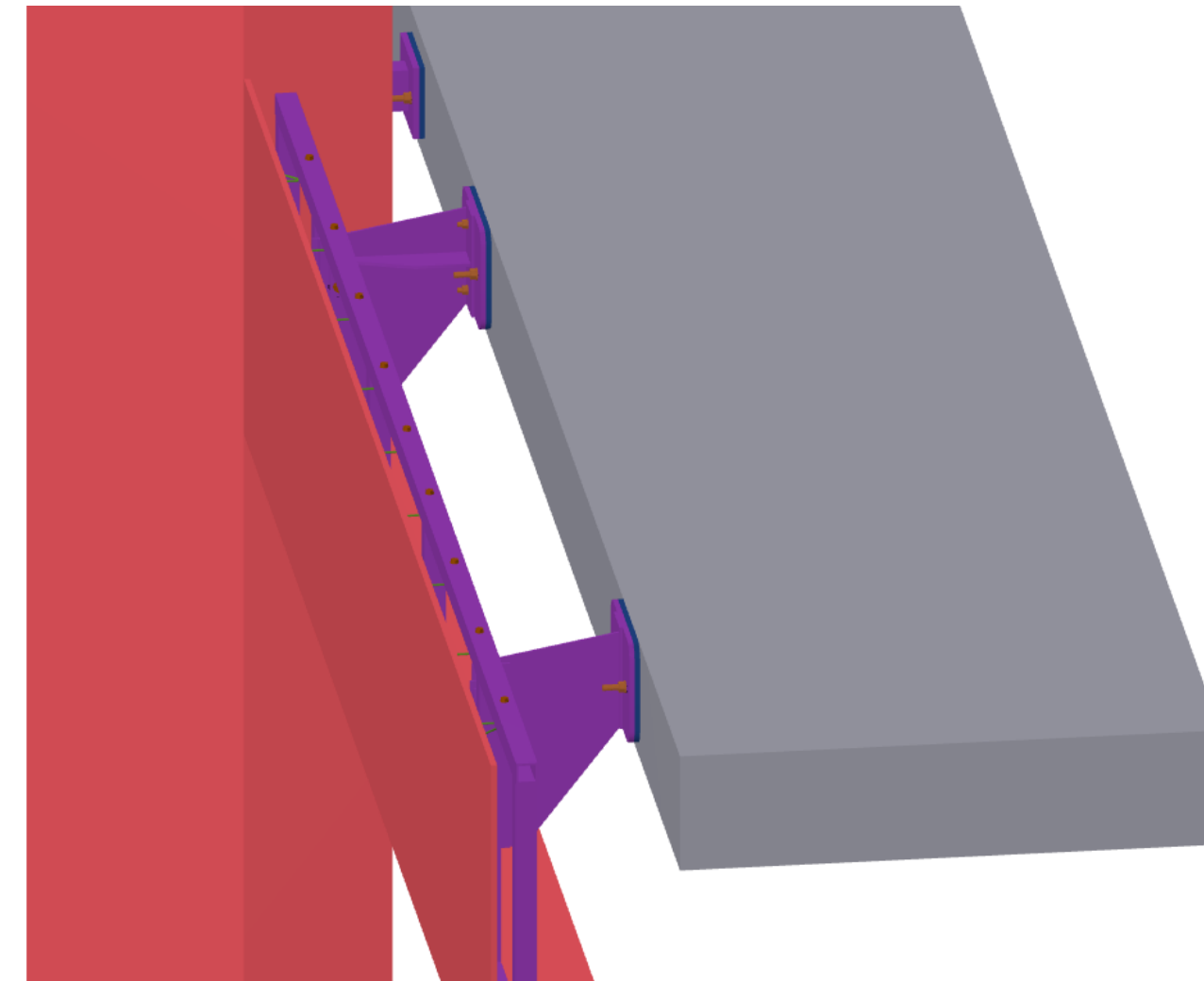
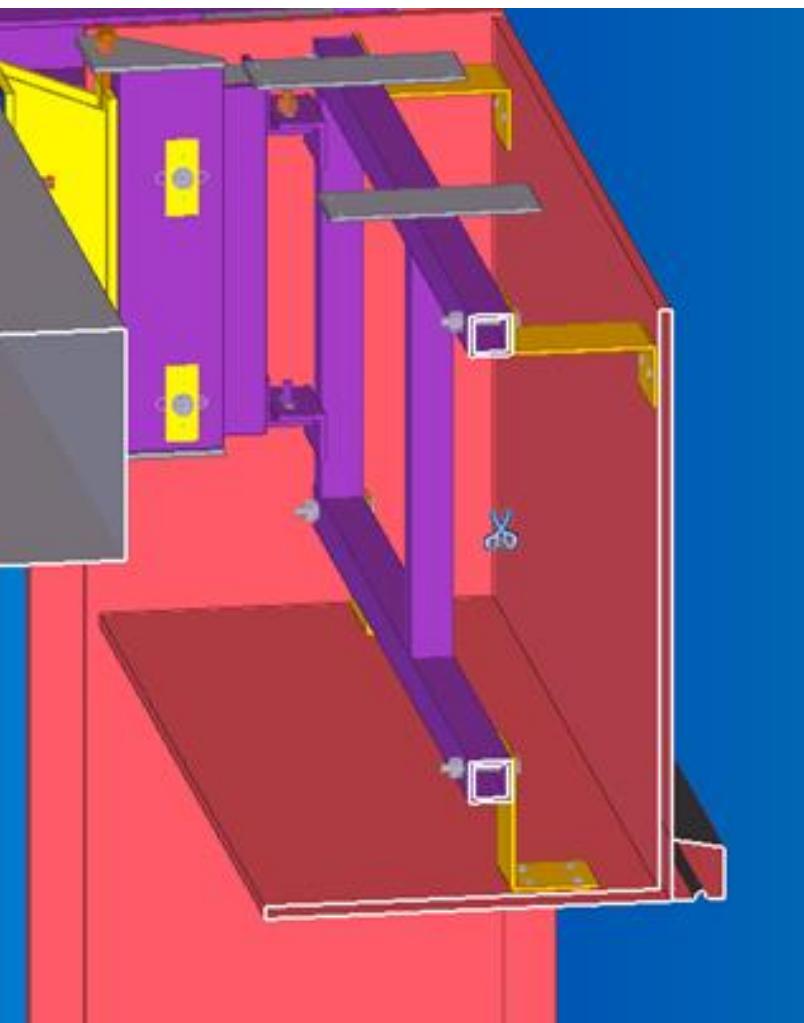


Cast or post-drilled

Fixings Anchor plates

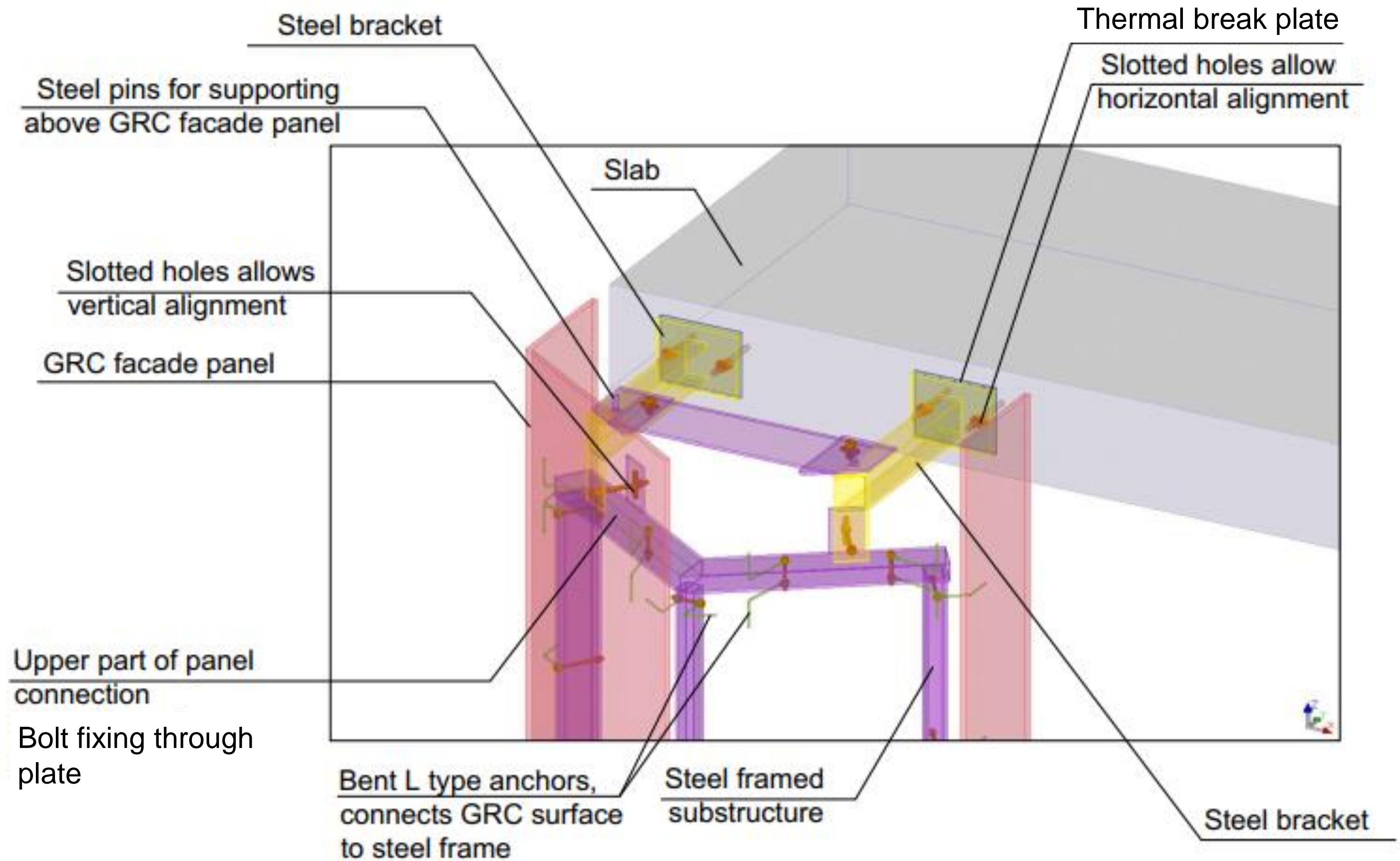


Bonded Fixing – Z & L Anchor plates



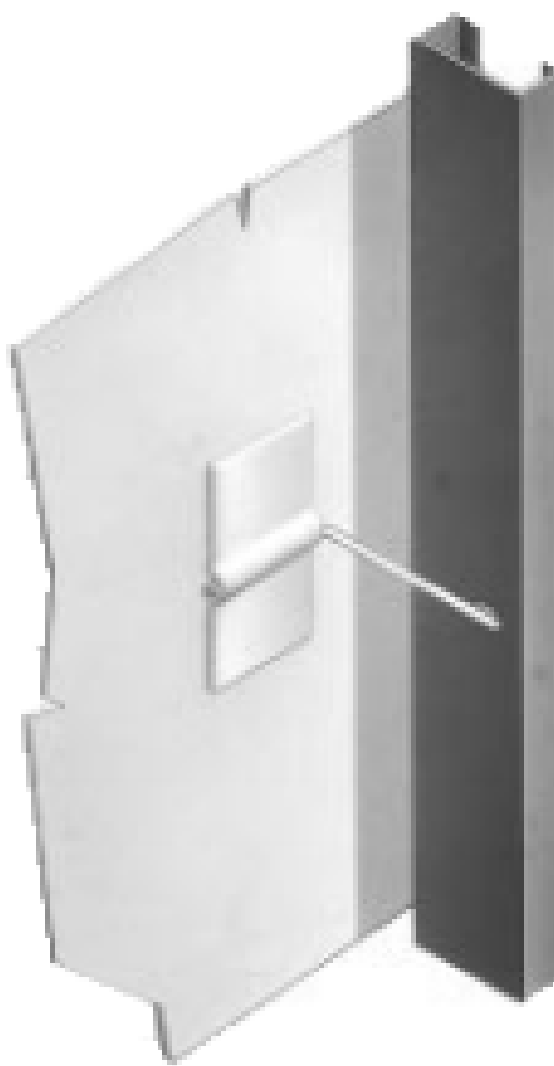
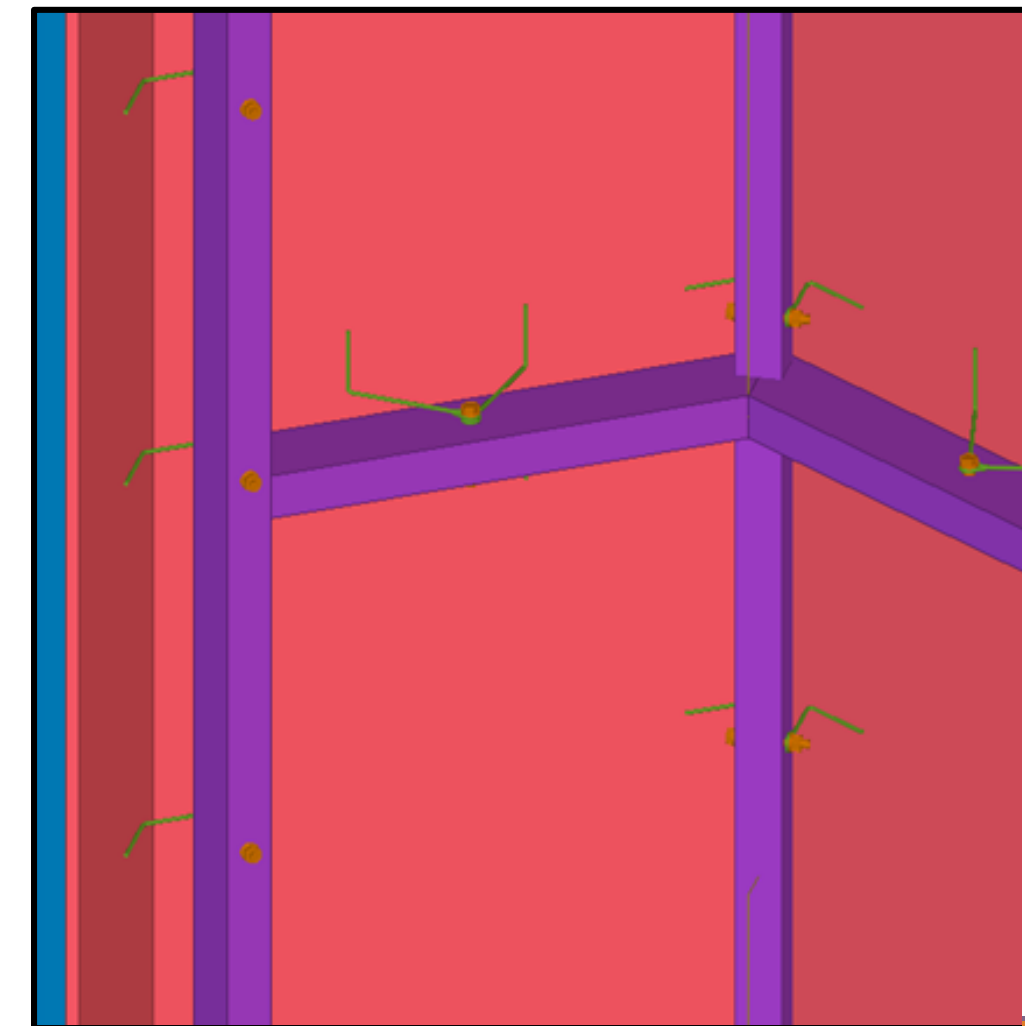
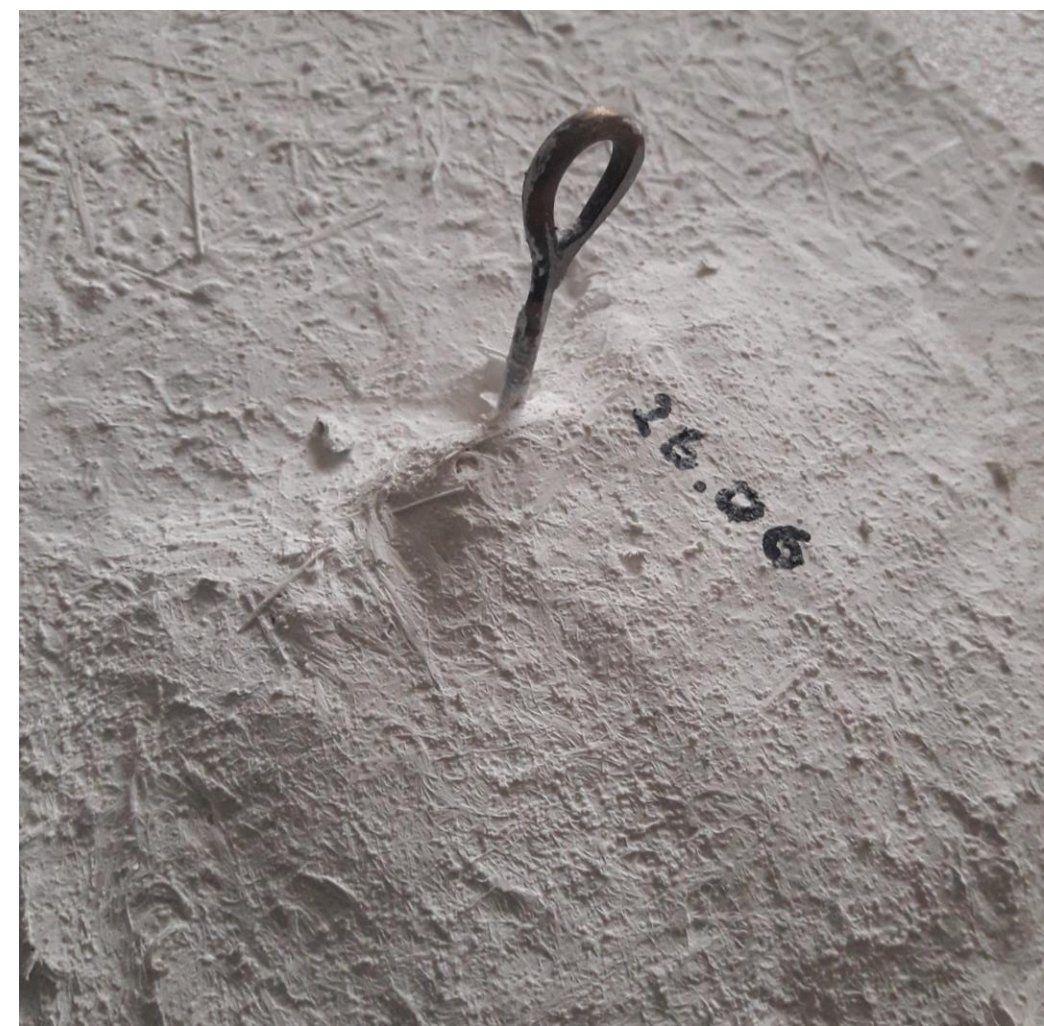
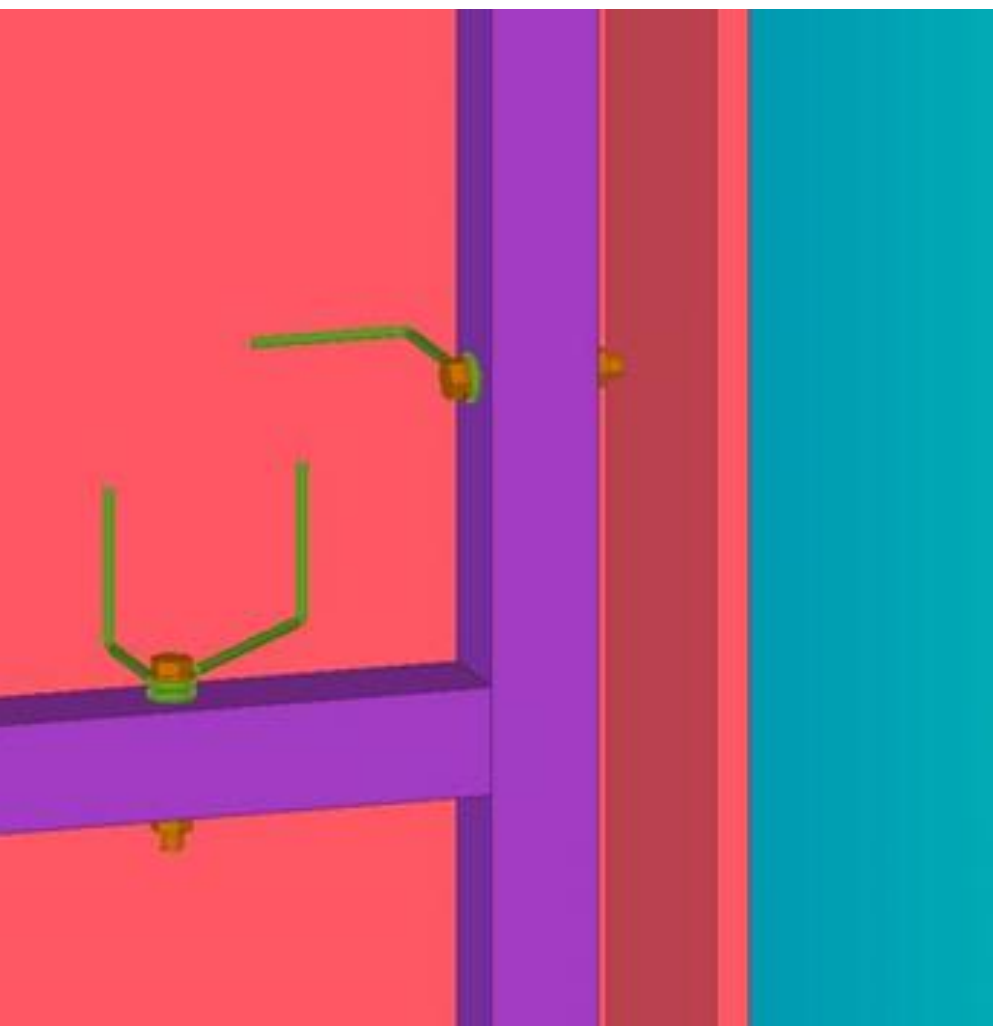
Strong & Reliable

Fixings Subframe and studs



Strong & Reliable

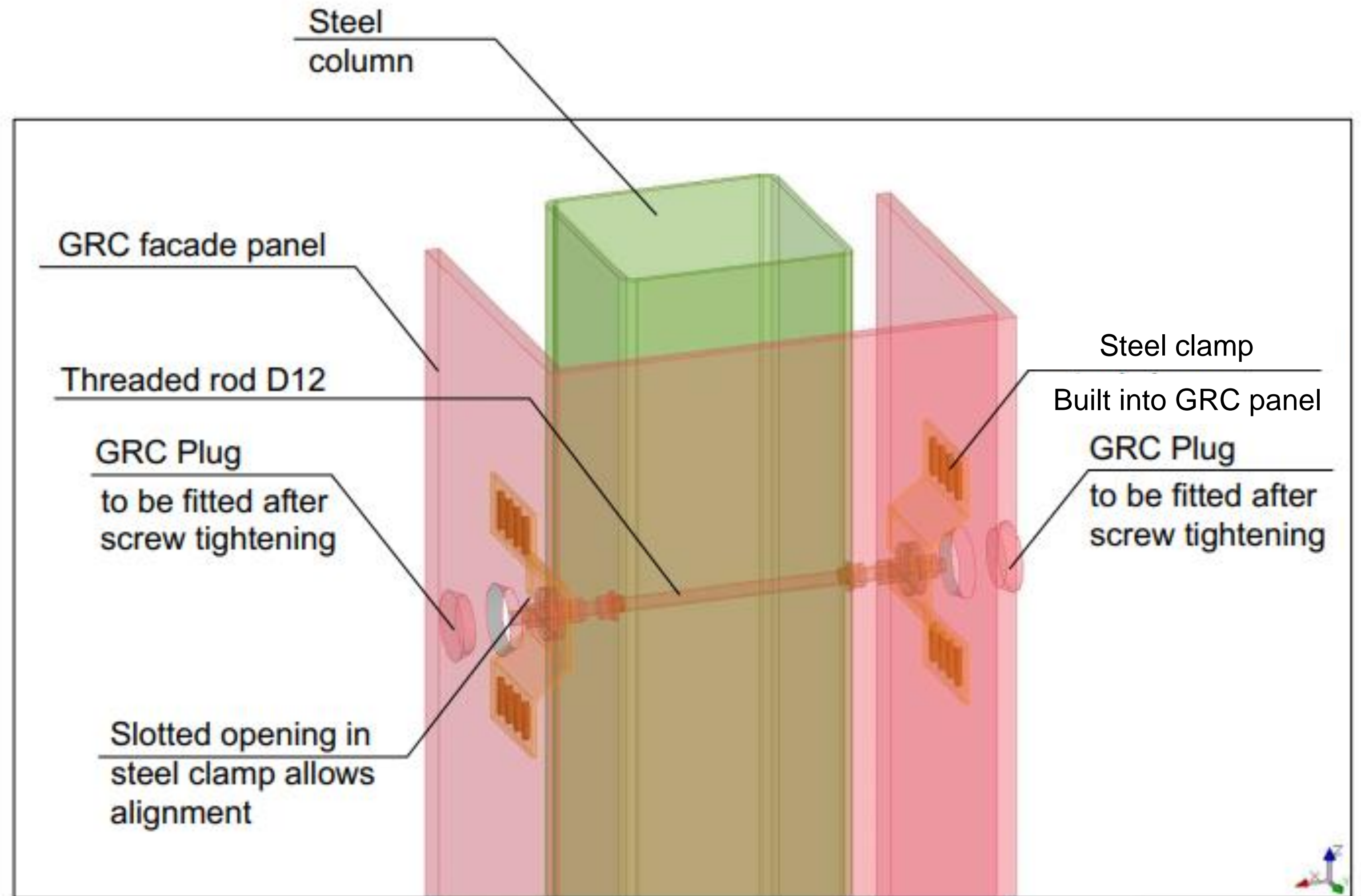
Tubular subframe



Strong & Reliable

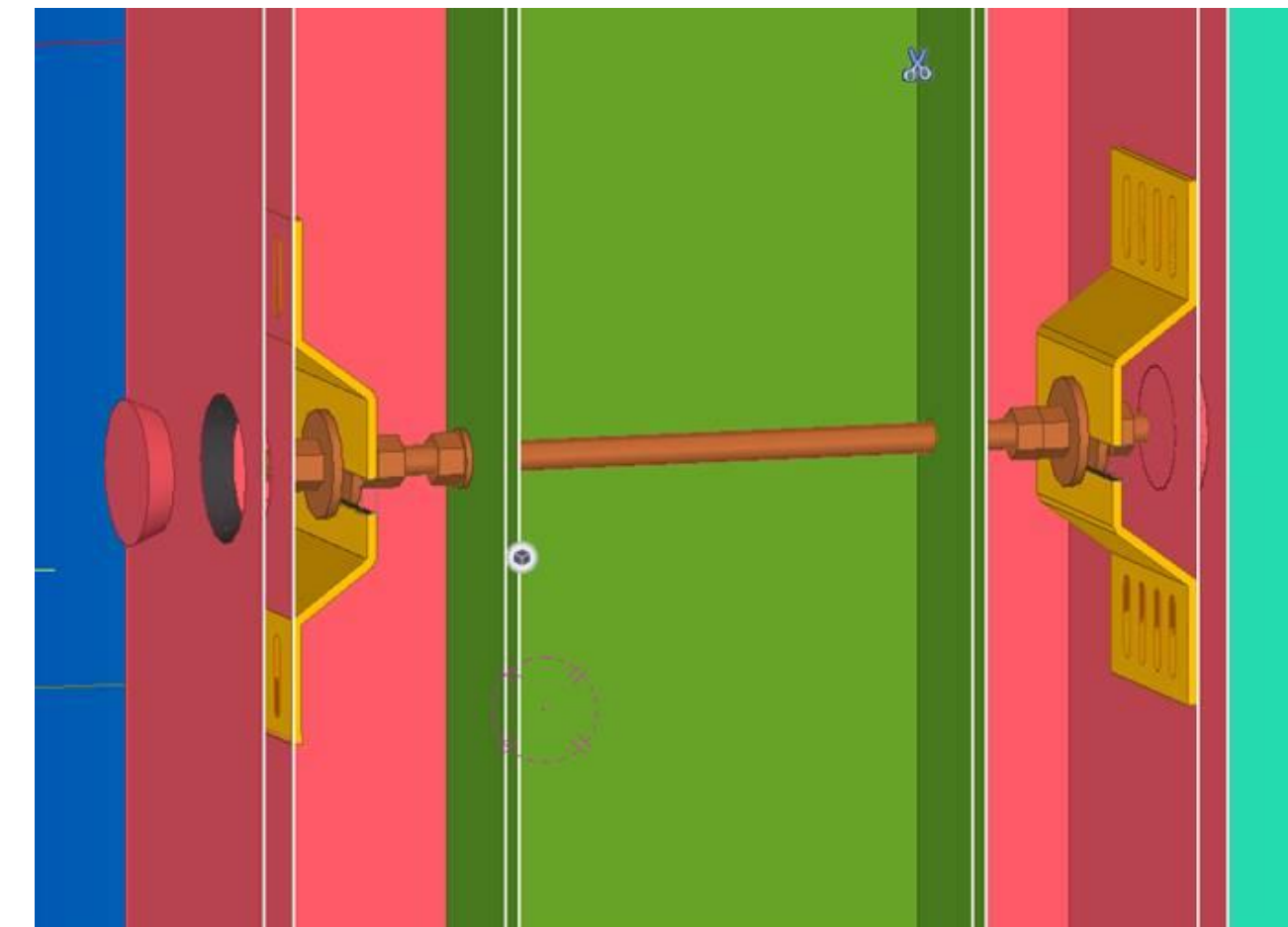
Fixings

Bonded fixing – Bent plate anchor



Strong & Reliable

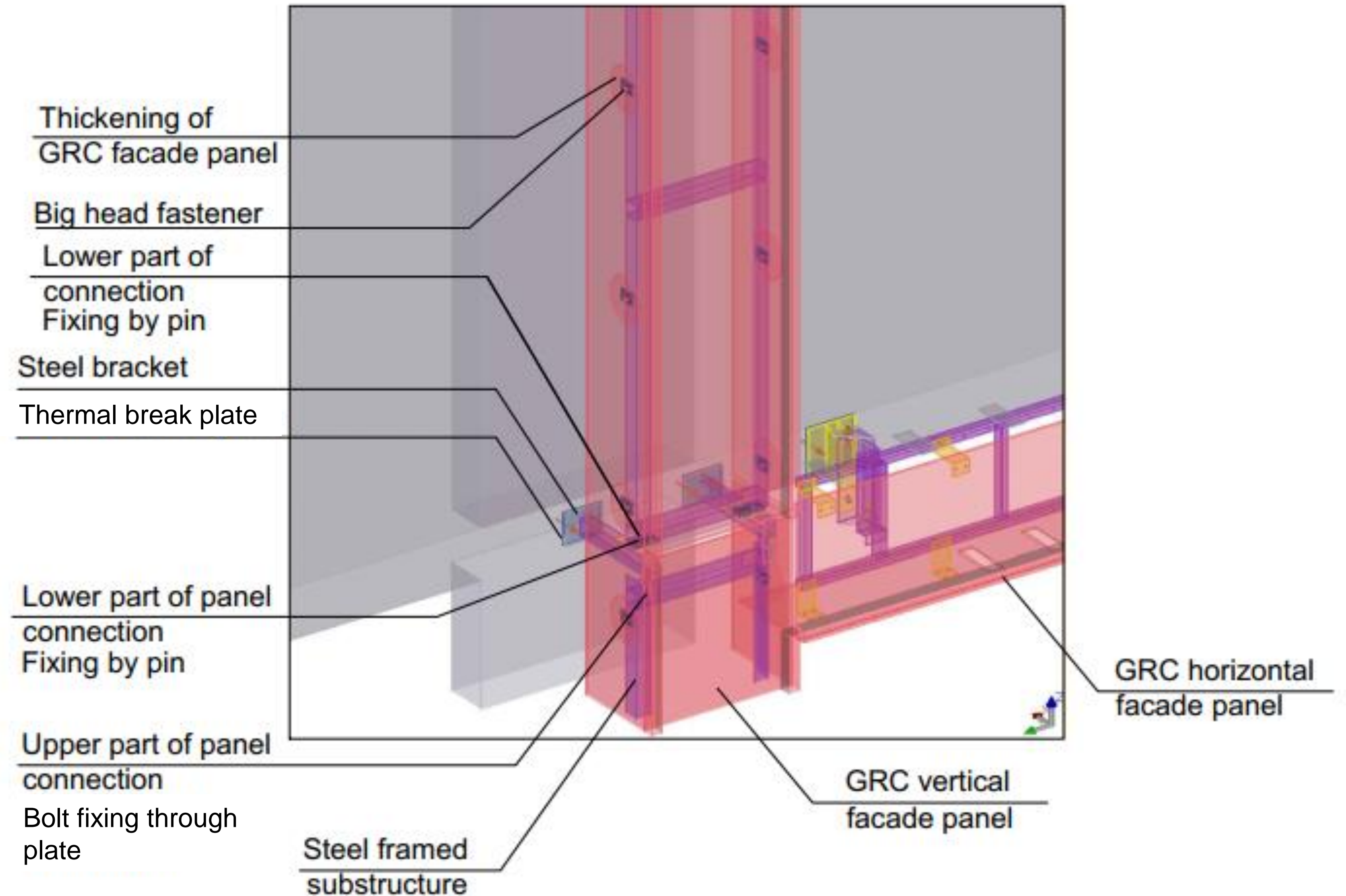
Bonded fixing Bent plate anchor



Strong & Reliable

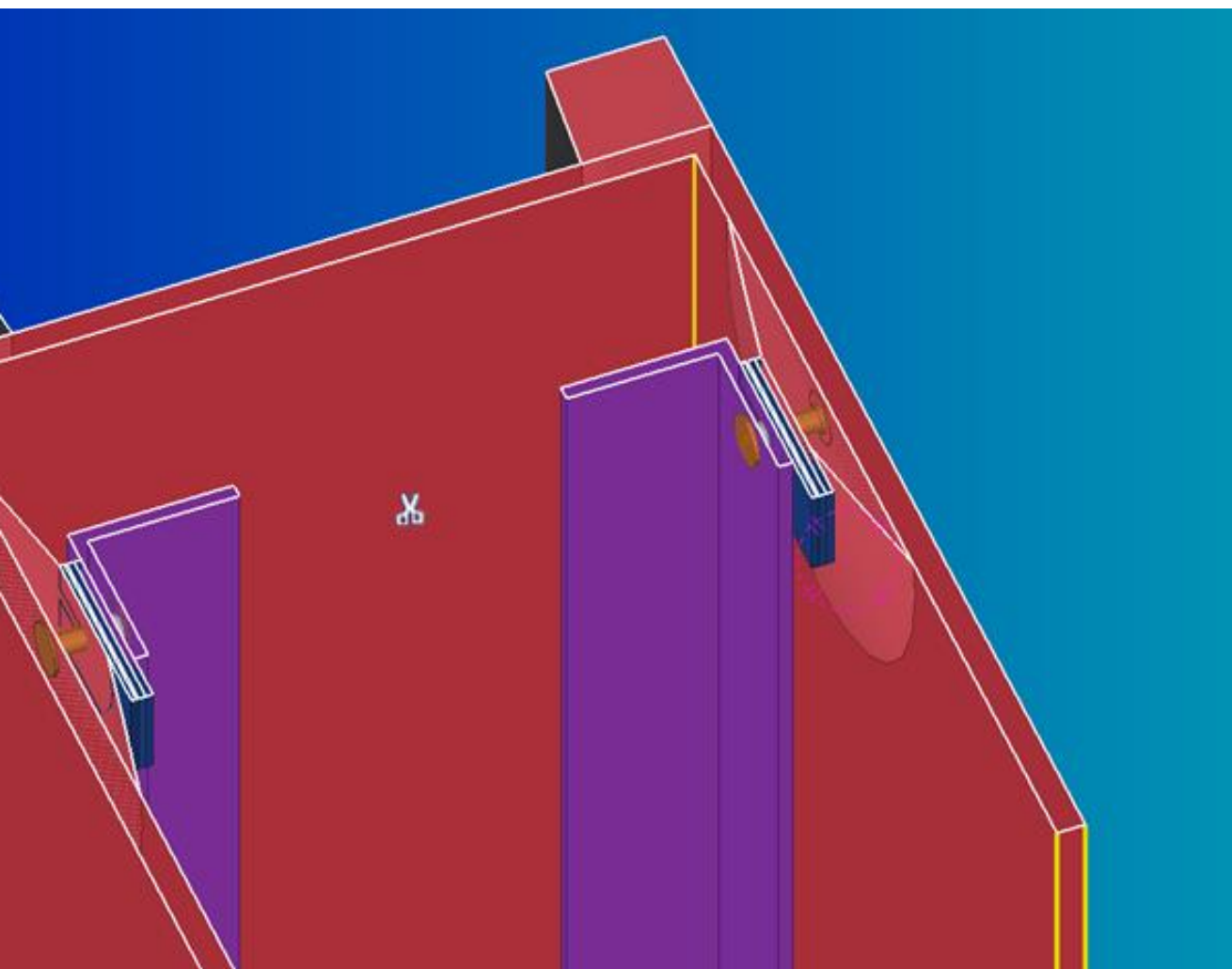
Fixings

Bonded fixing – Big-Head anchor

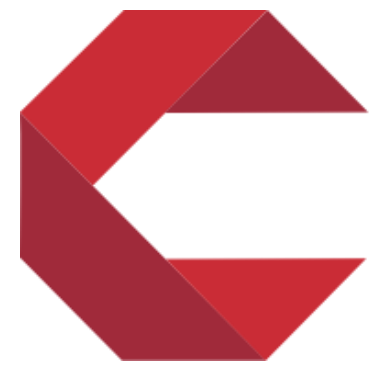


Strong & Reliable

Bonded fixing Bent plate anchor



Pull-out strength 2,5 kN



SKONTO
CONCRETE CLADDING

Design and manufacture of GRC panels and backing systems

- ▶ Complex geometries and endless surface finish options
- ▶ Reliable partner with experience in construction and manufacturing
- ▶ GRCA member with necessary accreditations for UK market



SKONTO
CONCRETE CLADDING

SKONTO CONCRETE CLADDING LTD

Head Office
Melngaiļa street 1a, Riga,
LV-1010. Latvia

London Office
The Hop Exchange
24 Southwark Street, London
SE1 1TY

Call us
U.K. +44 7712 623041
LV. +371 26 637211

Oskars Matisons
CEO, Member of the Board